

Stile Hall Gardens, London, W4 3BU

£699,950

WHITMAN & CO.

SALES · LETTINGS · COMMERCIAL

- Edwardian conversion flat
- Two spacious double bedrooms
- Close to numerous amenities
- Lovely south facing garden
- 15'7x14'8 Reception room with bay window
- Separate fitted kitchen

Tenure - Leasehold
 Lease Length - 981 years remaining
 Ground Rent - Peppercorn
 Service charge - £1600 pa
 Local Authority - Hounslow
 Council Tax - Band E

THE PROPERTY

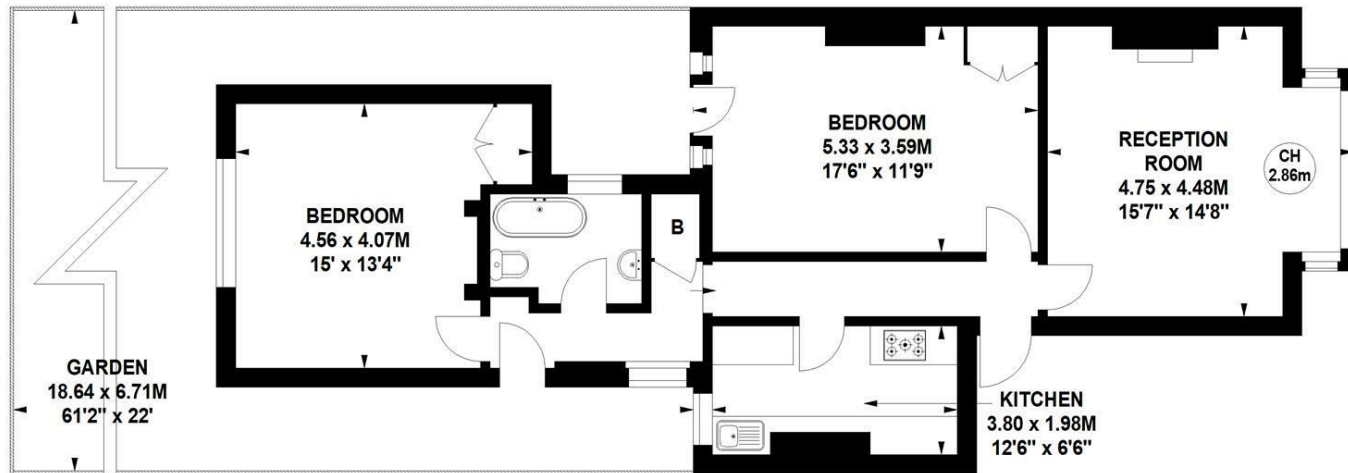
A bright and spacious Edwardian conversion flat with a lovely private south-facing garden located on this quiet residential street moments from Strand on the Green riverside and within a short walk of Chiswick High Road. The flat is well presented throughout and benefits from excellent proportions with the accommodation comprising a 15'7x14'8 reception room with bay window, fitted kitchen, two spacious double bedrooms with fitted wardrobes, bathroom, 38' south facing garden, utility cupboard, 981 year lease. Located close to The River, Kew Gardens, Chiswick House and Grounds and Chiswick High Road's shops, cafes and restaurants with transport links including Kew Bridge (main line) and Gunnersbury (Overground and Tube) stations, local bus routes and the A4/M4 for routes in and out of London.

Stile Hall Gardens, W4

Approximate gross internal area

76.74 sq m / 826 sq ft

Key :
 CH - Ceiling Height



Ground Floor

Not to scale, for guidance only and must not be relied upon as a statement of fact.
 All measurements and areas are approximate only

SITUATION



5-7 Turnham Green Terrace, Chiswick, London, W4 1RG

Tel 020 8747 8800

E-mail sales@whitmanandco.com

Website www.whitmanandco.com